



An **ALLSOP** Family Brand  
 PO Box 23, Bellingham, WA 98227  
 PH 800-426-4303  
 www.allsop.com

ALLSOP Europe Limited,  
 Industrial Park, Waterford, Ireland  
 PH 353-51-355091  
 www.allsop.eu

For more information visit  
[www.clingo.com](http://www.clingo.com)

# universal mobile tether™

hands-free mobile phone mount



**USER  
 GUIDE**  
 PLEASE READ  
 PRIOR TO USE

## SETUP

### MOBILE DEVICE INSTALLATION

- Step 1:** Open the product and remove the protective film on the Clingo pad (**diagram 1**).
- Step 2:** *This step is only for brand new Clingo Mobile Tethers.* Press your device firmly onto the new Clingo pad. Immediately remove the device. If when removing device you find it too difficult, simply touch the Clingo gel pad to your shirt or pants until desired stickiness is reached.
- Step 3:** Check Clingo pad for cleanliness and stickiness before each use. Product will not stick properly if the pad is not cleaned suitably. See PROPER CARE & CLEANING for instructions. Cleaning frequency may vary by environment.
- Step 4:** Clean dust, dirt or oils from the frame around the laptop screen or any other flat hard surface used prior to tethering your device.
- Step 5:** Attach one of the sticky sides of the Mobile Tether to the front frame of the laptop screen. NOTE: The hinge should be at top (**diagram 2, inset**).
- Step 6:** Wipe dirt and dust from your mobile device. Now attach it firmly to the Clingo pad (**diagram 2**). DO NOT attach your mobile device to the Clingo pad if it is protected by a leather or silicone case. The Clingo pad WILL NOT stick to leather or silicone.

### REMOVING MOBILE DEVICE

Hold the sides of the Clingo Mobile Tether with one hand and gently peel the mobile device from the Clingo pad from one side to the other with the other hand (**diagram 3**).

### REMOVING MOBILE TETHER FROM MONITOR

Gently peel (do not pull) away from monitor by twisting product away from monitor.

## PROPER CARE & CLEANING

Proper care and use of the product is necessary to maintain optimal stickiness on Clingo pad.

### FOR BEST CLINGO PAD CLEANING RESULTS

- Step 1:** Always remove your mobile device from the Clingo pad before cleaning.
- Step 2:** Run warm water with mild soap over Clingo pad and use fingers to remove dirt and dust. DO NOT use solvents to clean the Clingo pad.
- Step 3:** Let the Clingo pad air dry completely before using. The Clingo pad WILL NOT stick when wet.

### FOR QUICK CLEANING

For quick cleaning, use a damp, lint-free wipe or cloth (i.e. chamois) to remove dust, dirt and oil from Clingo pad or simply rinse with water and let it air dry (**diagram 4**). DO NOT use any paper products to wash or dry your Clingo product.

### CLINGO PAD

The Clingo pad is permanently bonded to the Mobile Stand. Do not attempt to remove the Clingo pad.

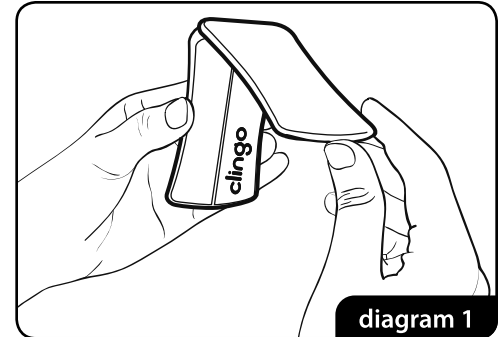


diagram 1

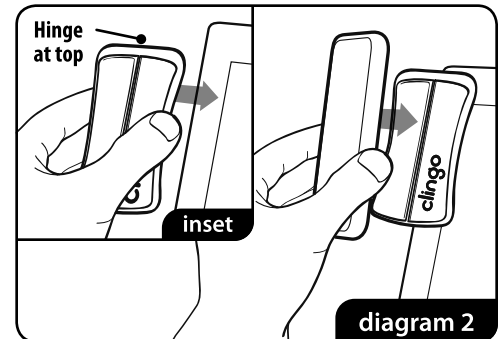


diagram 2

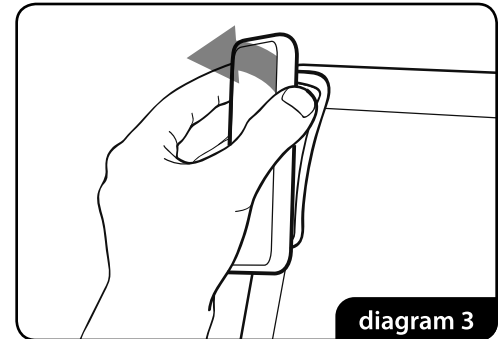


diagram 3



diagram 4

## \* SAFETY PRECAUTIONS

Allsop, Inc. and its subsidiaries are not responsible for any damages caused to your devices due to improper installation, misuse, failure to comply with proper care instructions, or use of this product.