



An **ALLSOP** Family Brand
 PO Box 23, Bellingham, WA 98227
 PH 800-426-4303
 www.allsop.com

ALLSOP Europe Limited,
 Industrial Park, Waterford, Ireland
 PH 353-51-355091
 www.allsop.eu

For more information visit
www.clingo.com

universal car vent mount™

hands-free mobile device use



USER GUIDE

PLEASE READ PRIOR TO USE

⚠ WARNING

Do not install Clingo products over an air bag cover or within the air bag deployment zone.

⚠ Use caution when inserting or removing the pedestal or the mobile device from the cradle. Make sure the vent clips are open wide enough to prevent damage to the vent fins/blades.

SETUP

ASSEMBLY

- Step 1:** Attach the mounting clips to the back of the pedestal (*diagram 1*). The mounting clips can be positioned with the flat sides facing up or down depending on the design of the vehicle vent.
- Step 2:** Place cradle protective film side down on a flat, hard surface.
- Step 3:** Press the ball head of the beam into the socket on the back side of the cradle with even pressure (*diagram 1*).
- Step 4:** Slide beam onto vent pedestal (*diagram 2*).

UNIVERSAL CAR VENT MOUNT INSTALLATION

- Step 1:** Find a safe* location on the vehicle vent. While holding the vent louvres, gently ease the mounting clips into vent louvres until mount clips are attached to the fin/blade of the vent (*diagram 2*). Try fitting the clips on the vent louvres with the flat end on top, if they don't fit twist the clips over and retry the fitting.
- Step 2:** Adjust the support leg vertically until it rests firmly along the bottom of the vent or dash surface below the vent. The support leg can be removed by pinching both sides inward and pulling toward you should your vents have a substantial curve backward.

MOBILE DEVICE INSTALLATION

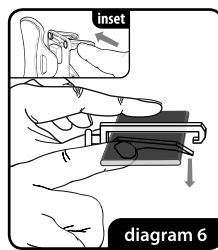
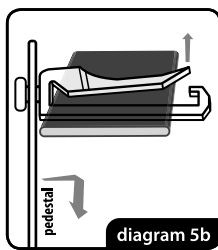
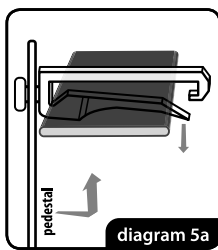
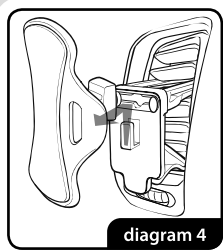
- Step 1:** Remove the protective film from Clingo pad.
- Step 2:** *This step is only for brand new cradles.* Press your device firmly onto the new Clingo pad. Immediately remove the device. If when removing device you find it too difficult, simply touch the Clingo gel pad to your shirt or pants until desired stickiness is reached.
- Step 3:** Check Clingo pad for cleanliness and stickiness before each use. Product will not stick properly if the pad is not cleaned suitably. See PROPER CARE & CLEANING for instructions. Cleaning frequency may vary by environment.
- Step 4:** Wipe dirt and dust from your mobile device. Attach it firmly to the Clingo pad. **DO NOT** attach your mobile device to the Clingo pad if it is protected by a leather or silicone case. The Clingo pad **WILL NOT** stick to leather or silicone.
- Step 5:** Adjust the angle of the cradle to find the optimal hands-free viewing position.

REMOVING MOBILE DEVICE

- Method 1: (Two-handed)** The safest method, hold the Clingo cradle's "wings" with one hand and with the other hand wrap your fingers around to the back of the device to hold your battery cover. Gently peel the mobile device off the Clingo pad from one side to the other (*diagram 3*).
- Method 2: (One-handed)** Wrap your hand around the phone and while holding the back of your device (battery cover) with your finger tips, use your middle finger or thumb to gently peel the mobile device from the Clingo pad from one side to the other.

REMOVAL FROM VENT

- Step 1:** Remove beam and cradle together from pedestal by sliding the beam up from the pedestal (*diagram 4*).
- Step 2a:** (If clips are flat side up) In one motion, push the pedestal into the vent, lift up and pull it out (*diagram 5a*).
- Step 2a:** (If clips are flat side down) In one motion, push the pedestal into the vent, push down and pull it out (*diagram 5b*).
- Step 2b:** Remove the vent pedestal by sliding the mounting clips to the center of the pedestal until both clips are released from the pedestal (*diagram 6, inset*).
- Step 3:** Remove the mounting clips by gently pulling on the non-flat part to make more space to easily allow the louvre to be released and push down on the louvre until the clip clears the louvre. Pull clip away from louvre (*diagram 6*).



PROPER CARE & CLEANING

Proper care and use of the product is necessary to maintain optimal stickiness on Clingo pad.

FOR BEST CLINGO PAD CLEANING RESULTS

- Step 1:** Always remove the cradle from the beam arm and your mobile device from the Clingo pad before cleaning.
- Step 2:** Run warm water with mild soap over Clingo pad and use fingers to remove dirt and dust. **DO NOT** use solvents to clean the Clingo pad.
- Step 3:** Let Clingo pad air dry completely before using. The Clingo pad **WILL NOT** stick when wet.

FOR QUICK CLEANING

For quick cleaning, use a damp, lint-free wipe or cloth (i.e. chamois) to remove dust, dirt and oil from Clingo pad or simply rinse with water and let it air dry (*diagram 7*). **DO NOT** use any paper products to wash or dry your Clingo product.

CLINGO PAD

The Clingo pad is permanently bonded to the cradle. Do not attempt to remove the Clingo pad.

* SAFETY PRECAUTIONS

Do not install Clingo products over an air bag cover or within the air bag deployment zone. Allsop, Inc. and its subsidiaries assumes no responsibility of liability for injury or death as a result of car crashes and/or air bag deployment. Allsop, Inc. and its subsidiaries are not responsible for any damages caused to your car, your device, or yourself due to installation or use of this product.

